



Trusted Difference At Every Turn

TURFXTREME™

BEARING SOLUTIONS FOR LAWN & GARDEN EQUIPMENT



Utilizing
AGXTREME
Technology

TOUGH BEARINGS THAT MAKE THE CUT

Contamination is the leading cause of premature bearing failure in residential and commercial equipment. Conventional bearings are not capable of providing consistent, long-term performance under harsh conditions.

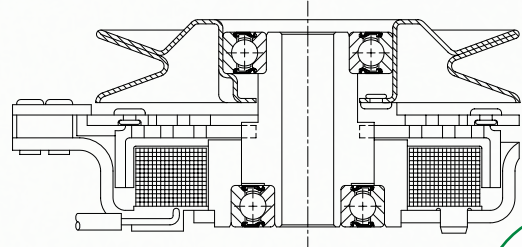
PEER TURFXTREME™ seal solutions utilize AGXTREME™ technology to seal out clippings, water and maintain seal integrity when exposed to external force due to wrapping debris and pressure washing. Preventing contaminant ingress substantially increases equipment life, requiring less frequent customer maintenance and greatly reduced cost of machine ownership.

PEER sealed-for-life solutions for Lawn & Garden equipment comply with international bearing standards and are easily interchangeable for use in existing applications.

Rely on PEER's range of Lawn & Garden bearing solutions to meet your most demanding performance expectations and keep your machines running.

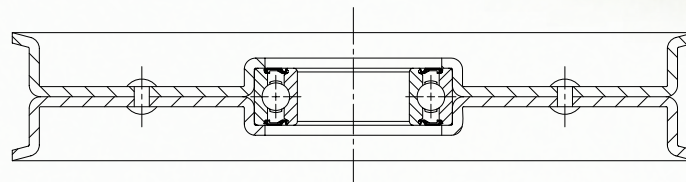
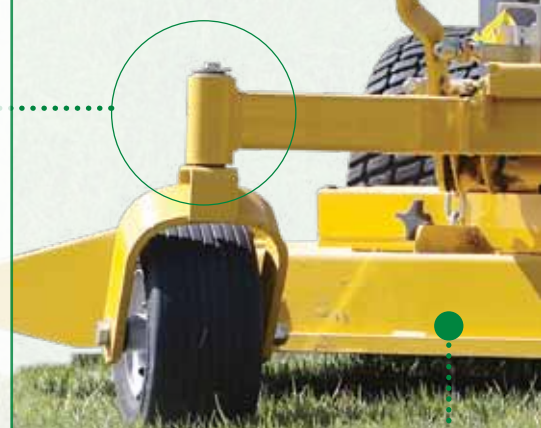
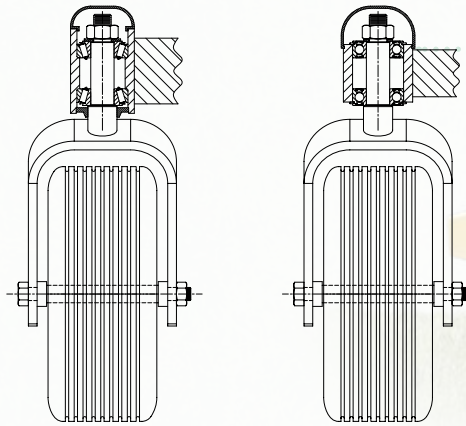
CLUTCH

- Typical bearing types used: Standard DGBB
- Seals are specially designed to prevent grease purge and ingress of clutch dust
- Seal material and grease options available for high temperature applications



CASTER

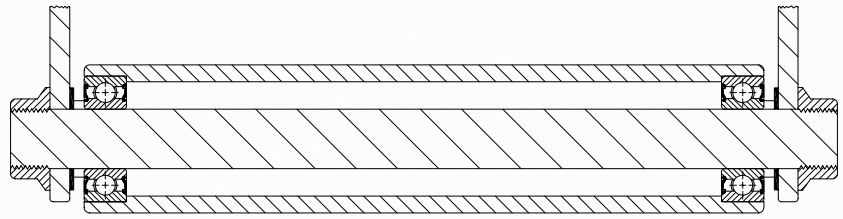
- Typical bearing types used: Standard DGBB and TRB
- Ball bearings with integrated snap rings for ease of mounting



IDLER PULLEY

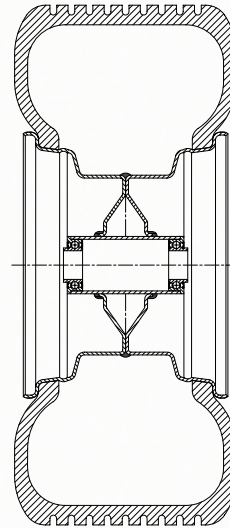
- Typical bearing types used: DGBB
- Increased grease fill for improved corrosion protection
- Seal options for Moderate, High and Xtreme environments
- Seals designed to avoid water intrusion during mower deck washing
- Special designs with extended inner rings available for ease of mounting





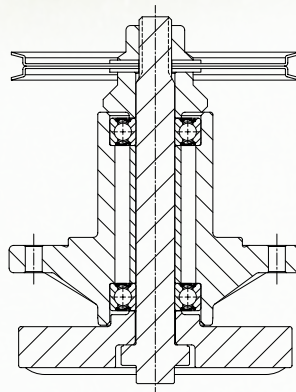
ROLLER

- Typical bearing types used: DGBB and TRB
- Increased grease fill for improved corrosion protection
- Seal options for Moderate, High and Xtreme environments including multi-lip seals
- Increased clearance for economical mounting (standard tube can be used)
- Flanges, snap rings or special dimensions available for ease of mounting



WHEEL

- Typical bearing types used: DGBB and TRB
- Increased grease fill for improved corrosion protection
- Seal options for Moderate, High and Xtreme environments
- Increased clearance for economical mounting (standard tube can be used)
- Flanges, snap rings or special dimensions available for ease of mounting



SPINDLE

- Typical bearing types used: DGBB and TRB
- Increased grease fill for improved corrosion protection
- Seal options for Moderate, High and Xtreme environments
- Seals designed to avoid water intrusion during mower deck washing
- Seal designs available (RSTFP) to eliminate damage due to wrapping debris
- Special designs with extended inner rings available for ease of mounting



DGBB = Deep Groove Ball Bearing
TRB = Tapered Roller Bearing

PRODUCT FEATURES, BENEFITS AND VALUE

- Multiple bearing performance levels provide options to meet moderate to Xtreme performance requirements in both residential and commercial applications
- Solutions comply with international bearing standards and are easily interchangeable for use in existing applications
- Solutions can be engineered to meet customer specific requirements
- Longer bearing life results in:
 - Less customer maintenance and reduced cost of machine ownership
 - Reduced OEM warranty exposure and cost
 - Strengthened OEM product and brand integrity



2RLYD



2RSFP



2RSTFP

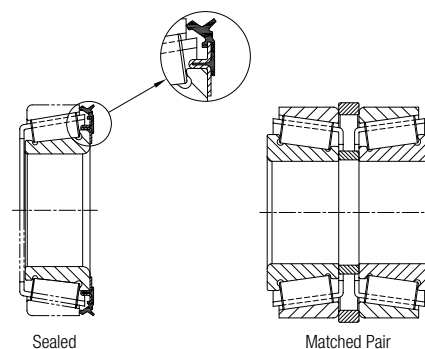
FEATURES AND BENEFITS

Feature	Benefit	2RLYD	2RSFP	2RSTFP
Contact sealed for life	• Contamination prevention	Moderate	High	Xtreme
High quality through hardened bearing steel	• Improves fatigue life	•	•	•
Precision ground and superfinished raceways	• Reduces vibration and extends life	•	•	•
Premium polyurea thickened grease	• Excellent high and low temperature capability • Extends grease life	•	•	•
Increased grease fill	• Improves corrosion protection during machine idle periods	•	•	•
Premium nitrile seal material composition	• Longer seal life due to improved high temperature and wear resistance		•	•
Optimized seal design	• Maintains seal integrity when exposed to external force due to wrapping debris and pressure washing		•	•
Precision ground seal contact surface	• Smooth surface finish results in longer seal lip life • Improves ring concentricity which results in increased seal effectiveness		•	•
Increased seal lip contact	• Improves contaminant exclusion in Xtreme environments			•
Heavy gauge steel shroud	• Protects seal from large solid contaminants (stones, pebbles, dirt)			•

TAPERED ROLLER BEARINGS

TRBs offer increased axial and radial load capacity as compared to DGBBs. Example applications include gearboxes, mower spindles and wheels. TRBs are available in metric and inch designs.

- Sealed TRBs offer an integrated solution for grease lubricated applications as an economical replacement to a traditional shaft seal and bearing as individual components.
- TRB matched pairs are assembled and packaged together with the cup and cone spacers required to achieve a pre-determined bench end play.



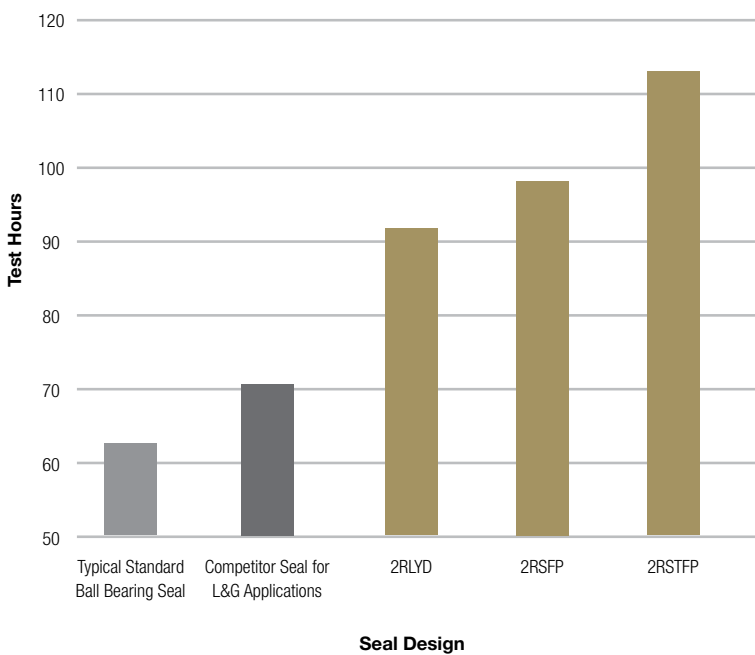
MUD SLURRY TESTING

Seal Design Validation

Mud slurry testing is performed to validate the ability of seal designs to prevent contamination ingress under extreme environmental conditions. Mud slurry is a mixture consisting of abrasive test dust, water and fertilizer intended to accelerate contamination conditions found in the field. This test method is proven to yield results indicative of relative seal performance in the application.



Mud Slurry Test Results



Typical Standard Ball Bearing Seal (32 hours)



Competitor Seal for L&G Applications (32 hours)



PEER 2RLYD Seal (32 hours)

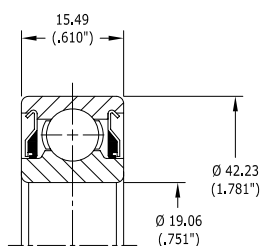


PEER 2RSFP Seal (32 hours)

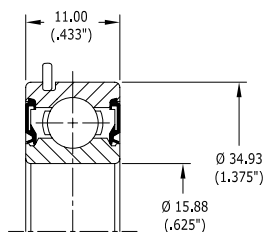


PEER 2RSTFP Seal (32 hours)

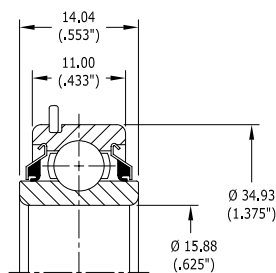
SPECIALS



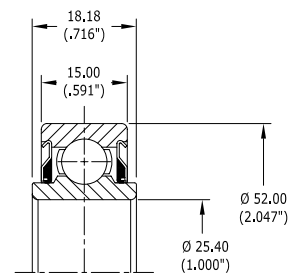
Z9504-2RSTFP



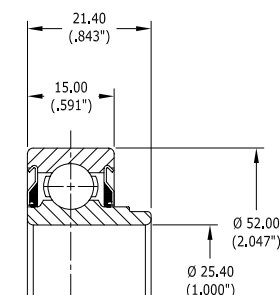
499502H



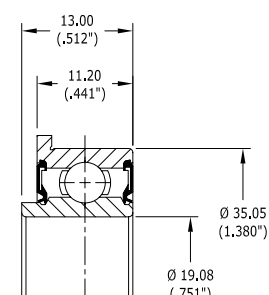
499502H-EE-C4



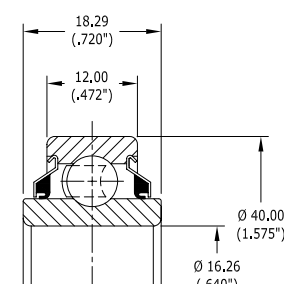
UCR205-16-LAG-SP



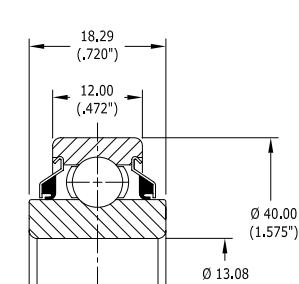
FHR205-16-LAG-SP



F6003E-2RLD-C4-SP



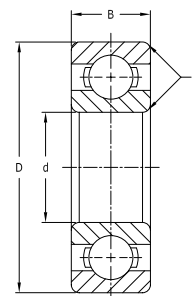
203KRR50



203KRR51

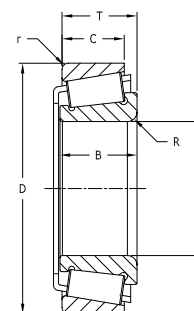
Deep Groove Ball Bearing Common Sizes

PEER Part Number	Seal Design Designation			Bore Diameter		Outside Diameter		Width		Max Shaft & Housing Radius	
	Contamination Exclusion Capability			d		D		B		r	
	Moderate	High	Xtreme	mm	inch	mm	inch	mm	inch	mm	inch
6203	-2RLYD	-2RSFP	-2RSTFP	17.000	0.6693	40.000	1.5748	12.000	0.4724	0.60	0.024
6204	-2RLYD	-2RSFP	-2RSTFP	20.000	0.7874	47.000	1.8504	14.000	0.5512	1.00	0.039
Z9504	-2RLYD	-2RSFP	-2RSTFP	19.016	0.7504	45.220	1.7805	15.490	0.6100	1.00	0.039
6205	-2RLYD	-2RSFP	-2RSTFP	25.000	0.9843	52.000	2.0472	15.000	0.5906	1.00	0.039
6206	-2RLYD	-2RSFP	-2RSTFP	30.000	1.1811	62.000	2.4409	16.000	0.6299	1.00	0.039
6207	-2RLYD	-2RSFP	-2RSTFP	35.000	1.3780	72.000	2.8346	17.000	0.6693	1.10	0.043
6305	-2RLYD	-2RSFP	-2RSTFP	25.000	0.9843	62.000	2.4409	17.000	0.6693	1.10	0.043



Tapered Roller Bearing Common Sizes

PEER Part Number	Bore Diameter		Outside Diameter		Cone Width		Cup Width		Assembly Width		Max Shaft Radius		Max Housing Radius	
	d		D		B		C		T		R		r	
	mm	inch	mm	inch	mm	inch	mm	inch	mm	inch	mm	inch	mm	inch
LM11749 / LM11710	17.463	0.6875	39.878	1.5700	14.605	0.5750	10.668	0.4200	13.843	0.5450	1.27	0.050	1.27	0.050
LM11949 / LM11910	19.050	0.7500	45.237	1.7810	16.637	0.6550	12.065	0.4750	15.494	0.6100	1.27	0.050	1.27	0.050
L44643 / L44610	25.400	1.0000	50.292	1.9800	14.732	0.5800	10.668	0.4200	14.224	0.5600	1.27	0.050	1.27	0.050
LM67048 / LM67010	31.750	1.2500	59.131	2.3280	16.764	0.6600	11.811	0.4650	15.875	0.6250	3.60	0.142	1.27	0.050



OUTDOOR POWER EQUIPMENT

Assembled with PEER Bearings



Chainsaw

Typical Bearings Used:
DGBB

- Crankshaft
- Clutch



Hedge Trimmer

Typical Bearings Used:
DGBB

- Crankshaft
- Gear Case



Gas Blower

Typical Bearings Used:
DGBB

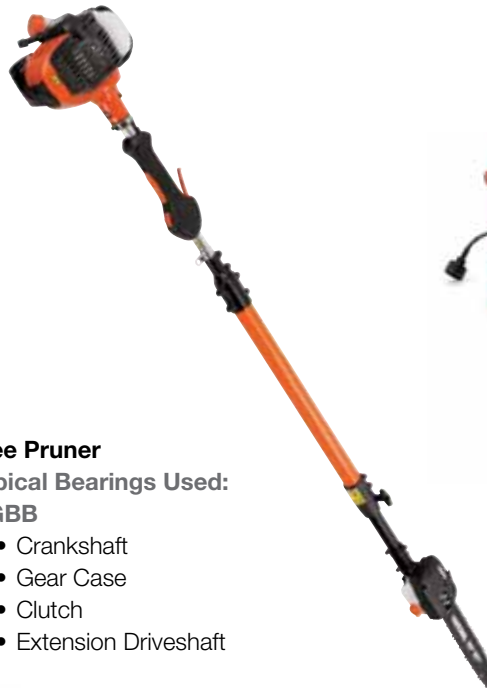
- Crankshaft
- Fan Shaft



String Trimmer

Typical Bearings Used:
DGBB

- Crankshaft
- Gear Case
- Clutch



Tree Pruner

Typical Bearings Used:
DGBB

- Crankshaft
- Gear Case
- Clutch
- Extension Driveshaft



Electric Blower

Typical Bearings Used:
DGBB

- Electric Motor



Tiller

Typical Bearings Used: DGBB

- Clutch
- Gear Case
- Crankshaft
- Driveshaft



Snow Thrower

Typical Bearings Used: DGBB

- Clutch
- Transmission
- Crankshaft
- Auger Assembly
- Driveshaft

TURFXTREME™

BEARING SOLUTIONS FOR LAWN & GARDEN EQUIPMENT



ABOUT PEER

- ▲ Full line of agricultural, radial, mounted unit ball bearings and tapered roller bearings
- ▲ Valued bearing solutions for lawn & garden, agricultural, industrial transmission, material handling, fluid, electrical, HVAC, off-highway and on-highway applications
- ▲ Global application engineering support
- ▲ TS-16949 certified manufacturing facilities
- ▲ Dedicated Research and Development center
- ▲ Testing capabilities include: fatigue life, noise/vibration, mud slurry and salt spray testing
- ▲ Flexible manufacturing to allow for low to high volume production
- ▲ Customer service excellence



Trusted Difference At Every Turn

To place an order call...

PEER Bearing Headquarters

2200 Norman Drive
Waukegan, IL 60085
USA
Ph: +1 847 578 1000
info@peerbearing.com

Italy

PEER Bearing S.R.L.
Via Paolo Nanni Costa, 12/3 A
40133 Bologna
Italy
Ph: +39 051 6120405
Europe.info@peerbearing.com

Brazil

Alameda Mamoré, 535-cj. 408/410
Alphaville – Barueri – SP
Brazil
CEP 06454-040
Ph: +55 11 4166 5650
LAM.info@peerbearing.com

Germany

PEER Bearing GmbH
Bahnhofsallee 5
40721 Hilden
Germany
Ph: +49 (0) 2103 90778 0
Europe.info@peerbearing.com

China

PEER China – SPZ
9/F, Tower B, Central Towers
#567 Langao Road
Putuo District, Shanghai,
P.R. China
Tel: +86 21 61484816
sales@peerchina.com

United Kingdom

PEER Bearing Ltd.
Unit 6, Chelworth Park
Chelworth Rd Cricklade,
Wiltshire SN6 6HE
England
Ph: +44 (0) 1793 759459
Europe.info@peerbearing.com



OUTDOOR POWER EQUIPMENT
INSTITUTE



www.peerbearing.com